

SEATING & TRANSPORT EQUIPMENT

BAFFIN The seat with the spine!

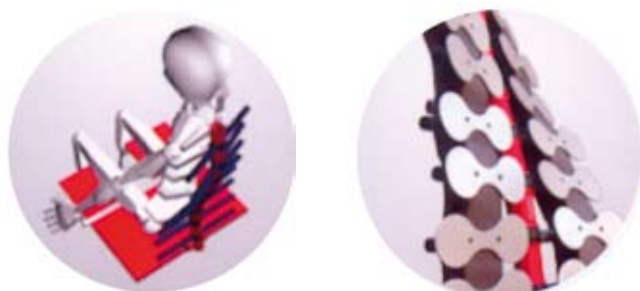
Model.: **SBSS-01** small
SBSS-02 medium
SBSS-03 large

Advantages of the BAFFIN Standing Seat:

- passively corrects abnormal curvature of the spine.
- adjustable to anatomical structure.
- "grows" with a child
- seat is removable from the mobile base.
- possibility of gradual standing up depending on the child's health condition
- manual or automatic change of the seat's position - sitting, lying and standing



The Baffin Standing Seat changes position from sitting, standing to lying (below) thus preventing contracture of muscles



The innovative spinal-support backrest can be adjusted to correct abnormal curvature of the spine.

The BAFFIN Standing Seat is a seating system which ensures that the benefits of existing rehabilitation are maintained; made possible by the innovative back support which simulates the human backbone. A perfect solution for children between the ages of 2 and 15 who are unable to sit or stand on their own, the BAFFIN enables them to sit and stand properly. Designed for people with abnormal curvature of the spine and muscle dysfunction. The spinal-support backrest, after proper adjustment, helps to restore the physiological spinal curvature. It also smoothly corrects all types of scoliosis and passively restores the correct position of kyphosis and lordosis of the spine. As the pelvis serves as the axis for the entire body when a person is in a sitting position the adjustment of the pelvic position corrects spinal position while simultaneously correcting the patient's entire bodily posture.

It can be used both during the treatment process or as a preventive device from consequences that may arise due to the patient's diseases; its main purpose being to passively correct posture while the patient is in a sitting position. The innovative feature of the BAFFIN Standing Seat is that it "grows" with a child by gradual adjustments according to the child's position and height in order to correct the spine and pelvis. The use of the BAFFIN Standing Seat by therapists after finishing exercises enhances the chances for the patients to regain correct posture. Each seat should be individually adjusted every few months or so by a therapist to suit a child's changing posture.

The possibility of fluent adjustment of the buttocks position assists in preventing bedsores. It also assists the patient in maintaining a correct head position which eases the process of feeding, learning and playing.

The BAFFIN Standing Seat is multipositional meaning it is also multipurpose. Controlled by a remote control it can be placed in a seating, lying or standing position bettering the influence on vascular, digestive and respiratory systems.



The Baffin with a power base and designer fabric, shown in sitting and lie-flat.



Size	Height (cm)	Maximum load (kg)	Back support size (cm)	Feet size (cm)
S	80 - 110	40	45	18
M	100 - 120	60	52	20
L	110 - 135	60	60	24